



History  
Science  
Health

Wei  
Laboratories

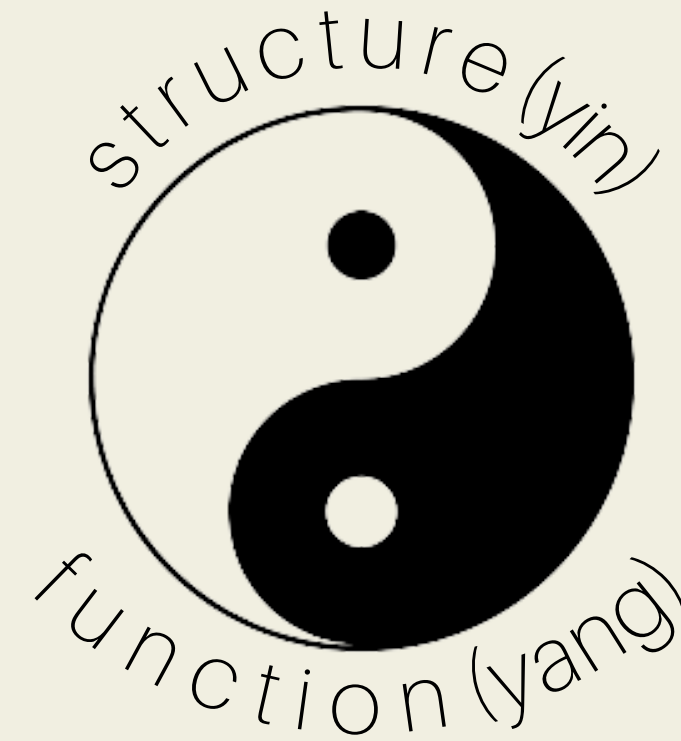
# Parasitic Infections

Featuring Detocin, Paramin, Protomin-R & Pulmin



# TCM Philosophy of Wei Labs

Our approach is to support and nurture the body to maintain a healthy balance between Yin and Yang, and Qi and Blood.



In the treatment of disease, Wei Laboratories herbal formulas focus on restoring the balance of the body's structure and function (Yin and Yang/Qi and Blood). This allows the body to repair its damage, eradicate pathogens, and clear toxins.



"The law of yin and yang is the natural order of the universe, the foundation of all things, mother of all changes, the root of life and death."

- *Yellow Emperor's Classic of Medicine*

You may be wondering how Wei Laboratories protocol is different from Western Medicine? Let us explain!

## TCM

We focus on:

- Identifying the root cause
- Focusing treatment on the root cause
- Repairing the structural damage
- Enhancing the body's ability to repair that damage
- Restoring healthy functionality
- Creating balance between structure and function

## Western

- Symptom-based approach
- Treatment is focused on addressing the patient's symptoms
- Relief of symptoms through prescription or over the counter medication that cause side effects
- Most often fail to address the condition





History  
Science  
Health

Wei  
Laboratories

# Parasite Introduction

There are over 1,000 types of parasites that can live in the human body. However, many types of parasites cannot be detected due to the unavailability of accurate diagnostic tools, leading to many parasitic infections being severely under-diagnosed.

Parasitic infections should be considered when a specific condition does not respond to typical treatments, or when routine treatments yield unexpected results.

In TCM, parasites are removed by clearing Heat and toxins while also countering the die-off effects.



Here is how we are different when it comes to addressing parasites:



## TCM

- Formulas for an array of different parasite infections
- Clear the parasites while also addressing die-off symptoms naturally
  - Combat inflammation
  - Supporting kidneys and liver
- Provides support and repair for the organ systems that the parasites infected
- Location-specific to target parasite infections

## Western

- Some allow parasites to run their course and just wait for all of them to pass
- Reduce the number of parasites via drugs to address symptoms
  - Antibiotics
    - Side effects may include nausea, gas, metallic taste in mouth
- "Certain antibiotics and antifungal drugs are effective against some parasitic infections. No single drug is effective against all parasites. For some parasitic infections, no drug is effective."

# How Parasites Enter the Body

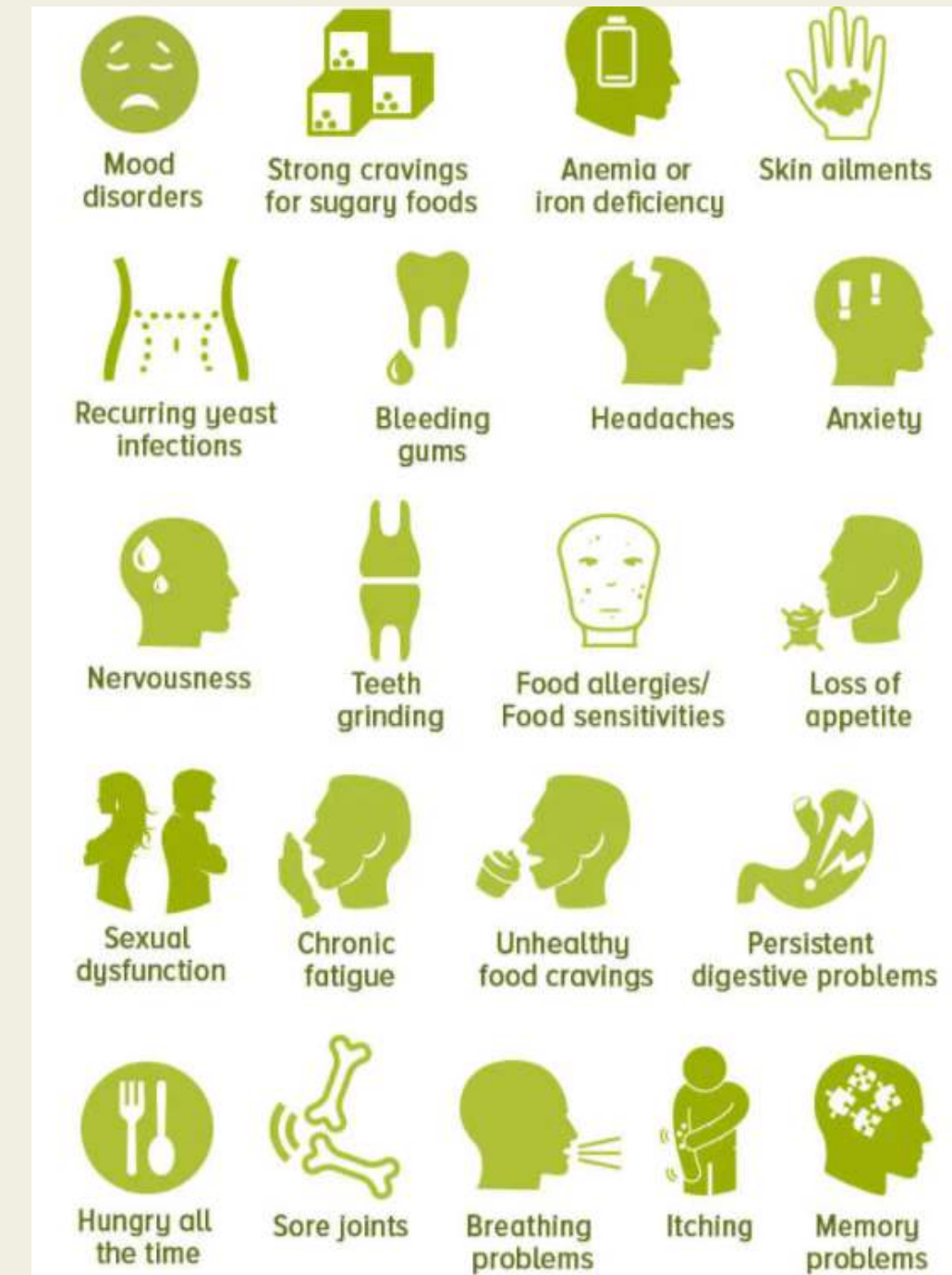
- Most parasites enter the human body through the gastrointestinal tract
  - Skin contact and inhalation as well
- Parasites that enter through the digestive tract are usually found in the bile duct and intestines
- Mainly ingested through contaminated food and water
  - Pets
  - Stomach acid can be deficient, making the GI microbiome susceptible to parasitic infection
    - Too many patients using antacids
- Bloating, gas, headaches, muscle pain, diarrhea, constipation, kidney pain, itchy anus
- Monocytes and eosinophil abnormal on blood work
  - Basophils for flukes



# Signs of an Infection

The signs of a parasite are often caused by the toxins that it releases into the human bloodstream. Here are the most common symptoms:

- Unexplained constipation, diarrhea, gas, bloating, nausea
  - May present as IBS or IBD
- You traveled internationally and got diarrhea on your trip
- You have had food poisoning and your digestion has not been the same since
- You have trouble falling asleep or you wake up multiple times during the night
- Skin irritations or unexplained rashes, hives, rosacea or eczema
- You grind your teeth in your sleep
- Painful, aching muscles or joints
- Fatigue, exhaustion, mood changes, depression or frequent feelings of apathy
- You never feel satisfied or full after your meal
- You've been diagnosed with iron-deficiency anemia



# Liver Flukes & Bile Duct Parasites

- Liver flukes are parasites that can infect humans and cause liver and bile duct disease
- Difficult to diagnose the condition because the symptoms are similar to many other conditions
  - Pain in the upper right abdomen when the liver flukes make their way from the intestines to the liver by burrowing through the lining of the liver
  - The bile ducts can become blocked and cause symptoms of nausea, diarrhea, and vomiting.
  - Patients may also experience weight loss, hives, fever and malaise in severe case.
  - Parasitic liver infections can cause high blood sugar and diabetes due to liver damage
- Occurs through ingestion of fluke-filled fresh-water, or through the consumption of raw fish





# Wellness Recommendation

## HIGHLIGHTED FORMULAS

### PARAMIN & DETOCIN

Paramin is a combination of “cold” and “warm” herbs that help to expel parasites that are loosely attached to the bile duct through their anesthetic effects on the parasites and by also increasing bile duct contraction. The “cold” herbs reduce inflammation in the bile duct, while the “warm” herbs help to heal damage in the bile duct and intestines due to parasite infection.

Detocin helps with symptoms of die-off by removing heat, reducing intestinal inflammation, and countering the toxic effects of the parasite’s toxins.

Let's take a closer look at some highlighted herbal ingredients:



### **PERICARPIUM ZANTHOXYLI**

Chuan Hua Jiao, Prickly Ash Peel, acrid, hot, slightly toxic, Kidney, Spleen, Stomach.

This herb has antiparasitic, antibacterial, anti-inflammatory, and antioxidative effects. It's been shown to inhibit parasite replication and decrease parasite load! It also contains hepatoprotective effects to help repair the liver from the liver fluke damage.



### **HERBA HOUTTUYNIAE**

Yu Xing Cao, Houttuynia / Fishy Smelling Herb, acrid, cool, LI, Lung.

Immunostimulant, diuretic and anti-inflammatory effects all allow this herb to help combat die-off symptoms. It's also been used for centuries to treat intestinal parasites and various types of infections!

# Protozoan Infections

- They are one of the most common types of parasites, as well as one of the most diverse; many types of protozoa
  - Tend to inhabit the human gastrointestinal tract
- Most are non-pathogenic, but some cause severe disease.
- Giardiasis
  - Most common human protozoan infection
  - Caused by *Giardia lamblia* which affects the upper part of the small intestine, the duodenum, and jejunum
  - 200 million cases are reported each year
  - Attach to the intestine's epithelial cells in order to absorb nutrients from the intestinal lumen which causes intestinal damage and digestive symptoms.
  - Causes structural damage of the gut



# Wellness Recommendation

## HIGHLIGHTED FORMULAS

### PROBIOSIS & PROTOMIN-R

Probiosis helps remove heat and reduce intestinal inflammation.

Protomin-R clears damp and helps clear out the upper GI protozoa.

After removing the parasites, SJ, Spring Capsule and Formula B are recommended to repair the structural damage to the gut that the parasites have caused.

Let's take a closer look at some highlighted herbal ingredients:



### **POMEGRANATE HUSK**

Pericarpium Granati (Shi Liu Pi, Pomegranate Husk)

This herb has strong antibacterial activities and can significantly influence structures of cell wall and membrane and inhibit protein synthesis of bacteria. This is an important factor in the structure of the gut which helps to combat the damage done by the parasites attachment.



### **CORTEX MAGNOLIAE OFFICINALIS**

Hou Po, Magnolia Bark, bitter, acrid, warm, aromatic, LI, Lung, Spleen, Stomach.

Has a wide range of pharmacological effects and has been used to treat conditions such as abdominal distention, vomiting, diarrhea, food accumulation, Qi stagnation, constipation, phlegm and fluid retention. It also has very potent antiparasitic effects and significantly reduces the prevalence of parasites.

# Lung Parasite Infections

- Can cause chronic lung conditions
- Lung infections by protozoa, nematodes, and trematodes can cause lesions or cysts in the lung
- Patients may experience chest pain, cough, phlegm production, hemoptysis (coughing up blood)
- The larvae of many parasite species can migrate to the lungs to mature through blood circulation as part of their life cycle causing lung irritation



# Wellness Recommendation

## HIGHLIGHTED FORMULAS

### PULMIN & RESPANIN

Pulmin moistens the lungs and respiratory tract and clears parasite infections in the lungs and the respiratory tract.

Respanin helps enhance blood flow to speed up the clearance of parasite die-off toxins and irritation to pulmonary blood vessels.

Soup A, Soup B, and LC Balancer are also recommended if patients have cyst or lesions in the lungs.

Let's take a closer look at some highlighted herbal ingredients:



### FRUCTUS MUME

Wu Mei, Mume Fruit, sour, warm, LI, Liver, Lung, Spleen.

Reduces cough frequency, decreases inflammatory cells in lung tissue, and attenuates the thickening of airway epithelium. Helps to boost Lung Qi and increase the production of fluids to help expel lung parasite infections.



### CINNAMOMI CORTEX

Rou Gui, Cinnamon Bark, acrid, sweet, hot, Heart, Kidney, Liver, Spleen.

Cinnamomi cortex was used as a very important spice and drug which has contributed to improving blood circulation and Yang Qi in the kidney. It also has anti-platelet aggregation and anti-inflammatory properties.

# Protocol Summary

Recommendations for every type of parasite

PARASITE	LOCATION	PROTOCOL
Liver Fluke	Bile duct/Liver	Paramin, Detocin Additional: Levera-R, Paramin-R, Silver, L-2, Bilegen, Levera, Brown, LC Balancer Optional: Seeds, Cirrhonin, Gallbladder
Acute Giardiasis (Protozoa)	Duodenum/Jejunum	Paramin-R, Probiosis
Chronic Giardiasis (Protozoa)	Duodenum/Jejunum/Bile Duct	Protomin, Paramin-R, Probiosis, Detocin Additional: Detocin-2, Spring, SJ, Formula B
Acute Amebiasis (Protozoa)	Large Intestine	Whitehead
Chronic Amebiasis (Protozoa)	Large Intestine/Liver/Kidney	Protomin-R, WhiteHead, Detocin Additional: Colitagen, Detocin-2, Optional: LC Balancer, Brown, Xcel, KS, BI
Toxoplasmosis, Amebiasis-(Protozoa)	Liver/Kidney/Intestine	Detocin, Detocin-2, Protomin, Protomin-R Additional: LC Balancer, Brow, Xcel, KS, Anemic, Formula C, Spring, SJ, Formula B
Toxoplasmosis, Amebiasis (Protozoa)	Lung	Pulmin, Respanin Additional: Soup A, Soup B LC Balancer
Ascariasis/ Helminth	Intestine/Bile duct	Paramin, Helmin, Detocin Additional: Levera-R, Paramin-R, Levera, Bilegen, Brown, LC Balancer
Pinworms	Intestine	Green
Nematodes	GI, Nerve	Nemacin, Green
Hook Worms, Tape Worms	GI	Tahoe, Red
Tightly Attached Large Size Parasite	GI	Queen, Bronze
Deeply Embedded Parasite	GI/Bile Duct	Seeds

# Usage & Expectations

Liver Fluke and Bile Duct Parasite Infection

- **PARAMIN (1 CAPSULE, 3 X DAY)**  
**DETOCIN (3 CAPSULES, 3 X DAY)**  
**ADDITIONAL:**  
**LEVERA-R (3 CAPSULES, 3 X DAY)**  
**PARAMIN-R (1 CAPSULE, 3 X DAY)**  
**SILVER (3 CAPSULES, 3 X DAY)**  
**L-2 (2 CAPSULES, 3 X DAY)**  
**BILEGEN(2 CAPSULES, 3 X DAY)**  
**LEVERA (3 CAPSULES, 3 X DAY)**  
**BROWN (3 CAPSULES, 3 X DAY)**  
**LC BALANCER (1 CAPSULE, 3 X DAY)**

- - Patients can experience symptom improvement within 3 days of treatment. However, 3 or more weeks of treatment is required for significant improvement and sustained results by covering the length of a parasite's life cycle.

# Usage & Expectations

Protozoan Infections (Chronic Giardiasis)

- **PROTOMIN (2 CAPSULES, 3 X DAY)**
- **PROTOMIN-R (2 CAPSULES, 3 X DAY)**
- **PROBIOSIS (2 CAPSULES, 3 X DAY)**
- **DETOCIN (3 CAPSULES, 3 X DAY)**
- **ADDITIONAL:**
- **SPRING CAPSULE (2 CAPSULES, 3 X DAY)**
- **SJ (2 CAPSULES, 3 X DAY)**
- **FORMULA B (3 CAPSULES, 3 X DAY)**

- Patients can experience symptom improvement with 3 days of the protocol.
- 3-4 weeks of treatment is recommended for significant improvement and sustained results.
- Detocon-2 may also be required if the protozoan infection can't be completely cleared by Detocin.
- 3-4 weeks of Spring Capsule, SJ, and Formula B



# Usage & Expectations

## Lung Parasite Infections

- **PULMIN (3 CAPSULES, 3 X DAY)**  
**RESPANIN (2 CAPSULES, 3 X DAY)**  
**ADDITIONAL:**  
**SOUP A (2 CAPSULES, 3 X DAY)**  
**SOUP B (2 CAPSULES, 3 X DAY)**  
**LC BALANCER (1 CAPSULE, 3 X DAY)**

- - Patients can experience symptom improvement in 3 days.
  - 3-4 weeks of treatment is required for significant improvement and sustained results.
  - Soup A, Soup B, and LC Balancer are also recommended if patients have cyst or lesions in the lungs.

# INGREDIENT LIST

## DETOCIN

- Herba Houttuyniae
- Flos Lonicerae
- Fructus Forsythiae
- Radix Scutellariae
- Herba Artemisiae Scopariae
- Radix Paeoniae Rubra

## PARAMIN

- Cortex Phellodendri
- Fructus Mume
- Pericarpium Zanthoxyli
- Radix Angelicae Sinensis
- Radix Codonopsis
- Ramulus Cinnamoni
- Rhizoma Coptidis
- Rhizoma Zingiberis

## PROTOMIN-R

- Cortex Magnoliae Officinalis
- Fructus Crataegi
- Fructus Hordei Germinatus
- Fructus Jujubae
- Pericarpium Citri Reticulatae
- Poria
- Radix Glycyrrhizae
- Rhizoma Atractylodis
- Rhizoma Zingiberis

## PULMIN

- Fructus Mume
- Radix Ophiopogonis
- Radix Platycodi

# Research

Wei Laboratories offers a full-range of Chinese herbal supplements to address hundreds of health conditions.

## **The herbal formulas are determined through the following research process:**

- The individual herbs being selected are based on their TCM descriptions and the pharmacological/clinical research publications.
- The use of certain herbal combinations for a specific condition is based on clinical research publications on the successful treatment of the condition utilizing those herbs, our accumulated knowledge, and the practitioner's previous feedback.

## **Clinical testing of the formula with practitioners undergoes the following process:**

- The herbal formula will be tested with practitioners in their clinic for a specific condition which is defined by the TCM and Western diagnosis.
- After obtaining 6 consecutive positive patient outcomes, we will launch the formula for that specific condition.
- Practitioners may continue their clinical testing for other indications and give us their positive feedback. We will then make further testing on those indications with other practitioners until we have 6 consecutive positive patient outcomes before we include the new indication.

## **Wei Labs has had many practitioners who have participated in this process and have given us valuable feedback in the past twenty years. Some of these practitioners include:**

- Dennis Sievers, DC, Kinesiologist, VA; Ronald Mullen, LAC, NC; Brian Hess, DC, VA; Marylin Coady, DC, Functional Medicine, NM; Kamau Kokayi, MD/LAC, NY; John Filippini, DC, Functional Medicine, CA; Charles Lewis, ND, AR; Ayla Wolf, DAOM, MN



# Manufacturing Process

Here's why you can always be confident in Wei Laboratories products.



## **US BASED WHOLESALEERS**

All of Wei Laboratories herbal ingredients are purchased through US based wholesalers who must meet the FDA guidelines to sell in the US.



## **CLEAN INGREDIENTS**

Wei Laboratories manufacturing of the products not only meet the FDA requirement, it exceeds it. For example, Wei Labs incorporates a sterilization process which ensures longer shelf-life without the use of any preservatives.



## **CGMP FACILITY**

Wei Laboratories formulas are packaged and produced in a cGMP facility and follows all industry guidelines required by the FDA to ensure our products are top of the line.

# Partnership Benefits

## Your Vision is Our Focus

Our primary focus is benefiting your practice in as many ways as possible. Let us learn about your practice and vision, then work closely with you to design a comprehensive plan to help you achieve your success.



Marketing Support

Patient Referrals

Addition to Your Staff

Troubleshooting

In Office Marketing Brochures / Flyers

Commission