



History  
Science  
Health

Wei  
Laboratories

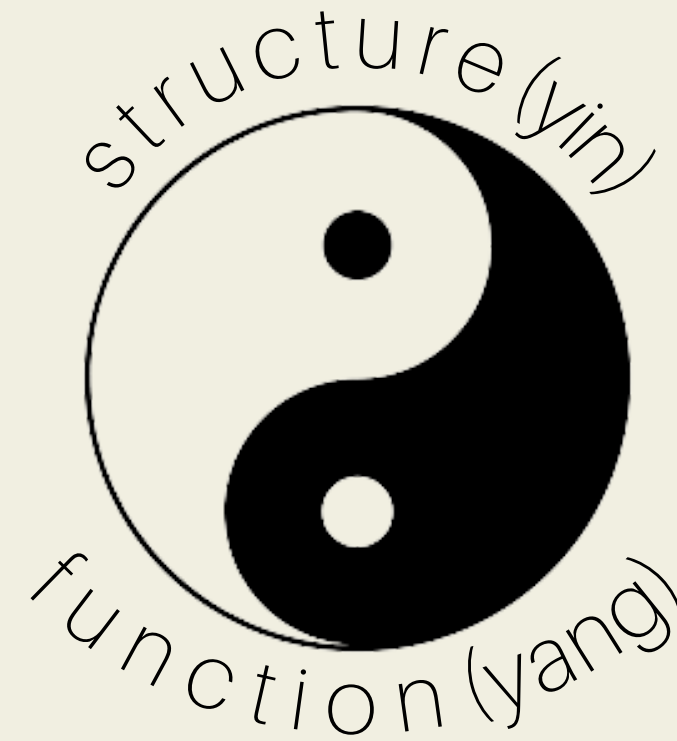


# Wei Detox

Featuring the Wei Detox 14 and 28 Day Detox

# TCM Philosophy of Wei Labs

Our approach is to support and nurture the body to maintain a healthy balance between Yin and Yang, and Qi and Blood.



In the treatment of disease, Wei Laboratories herbal formulas focus on restoring the balance of the body's structure and function (Yin and Yang/Qi and Blood). This allows the body to repair its damage, eradicate pathogens, and clear toxins.



"The law of yin and yang is the natural order of the universe, the foundation of all things, mother of all changes, the root of life and death."

- *Yellow Emperor's Classic of Medicine*



You may be wondering how Wei Laboratories protocol is different from Western Medicine? Let us explain!

## TCM

We focus on:

- Identifying the root cause
- Focusing treatment on the root cause
- Repairing the structural damage
- Enhancing the body's ability to repair that damage
- Restoring healthy functionality
- Creating balance between structure and function

## Western

- Symptom-based approach
- Treatment is focused on addressing the patient's symptoms
- Relief of symptoms through prescription or over the counter medication that cause side effects
- Most often fail to address the condition





History  
Science  
Health

Wei  
Laboratories

# Wei Detox Introduction

With the intensive use of chemicals and pesticides in the past century, we are all now living in an environment that is contaminated by millions of different types of chemicals and pesticides.

The Wei Detox program employs Chinese herbal formulas that help facilitate the organs including the digestive tract, lungs, heart, blood and lymphatic systems, the urinary tract and female or male reproductive system to release the accumulated toxins, assist the liver in processing the toxins to non-toxic compounds, and support the kidneys to filter the toxins out the body.





Here is how we are different when it comes to detoxing:



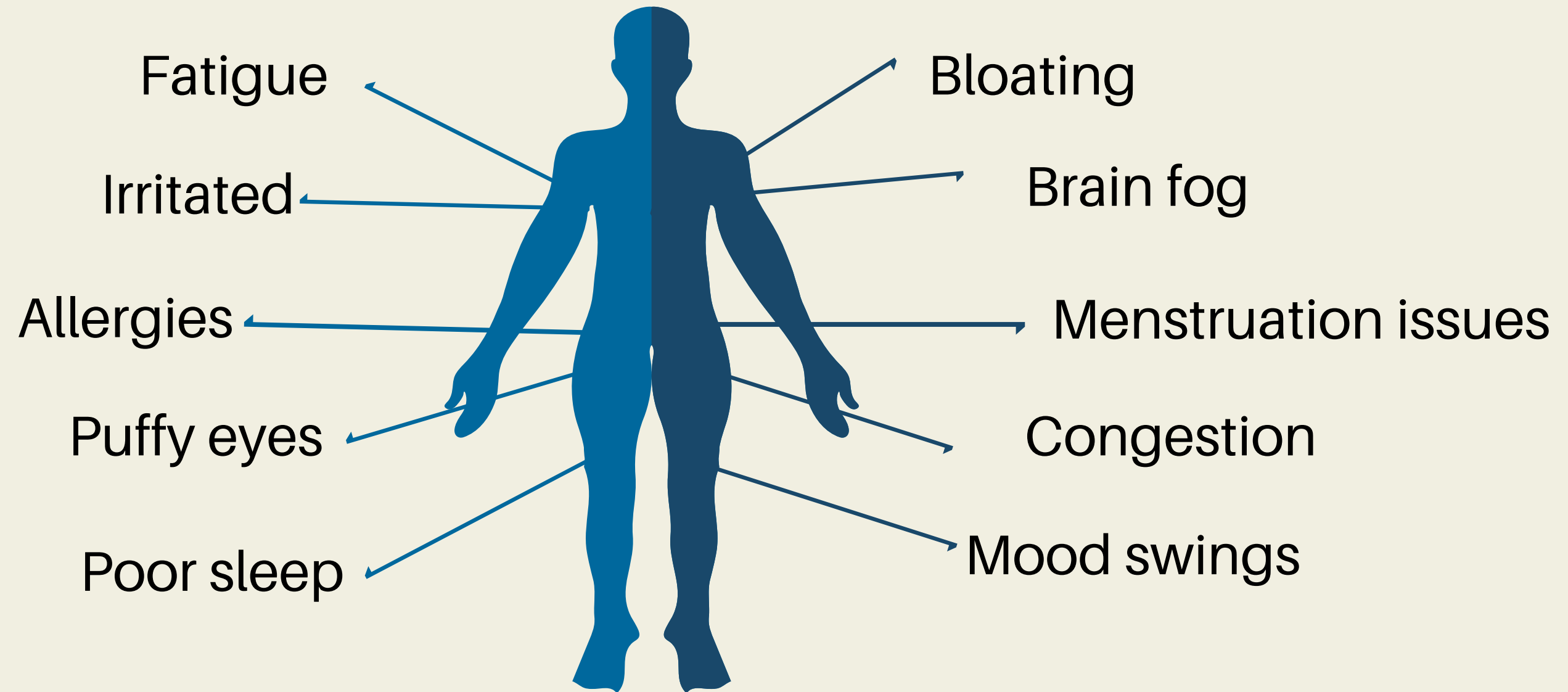
## TCM

- Targets multiple body systems including
  - GI, Lungs, Heart, Blood, Lymphatic System, Urinary System, Female/Male Reproductive System, Liver, Kidneys
- Supports the repair of any injury or damage to the organs caused by the toxins and improve its functionality
- Practitioner-supervised
- Clears pathogenic bacteria

## Western

- Flushes the system to rid toxins
- Often involve the use of laxatives, diuretics, vitamins, minerals, teas, and other foods thought to have detoxing properties.
- Only targets certain body systems

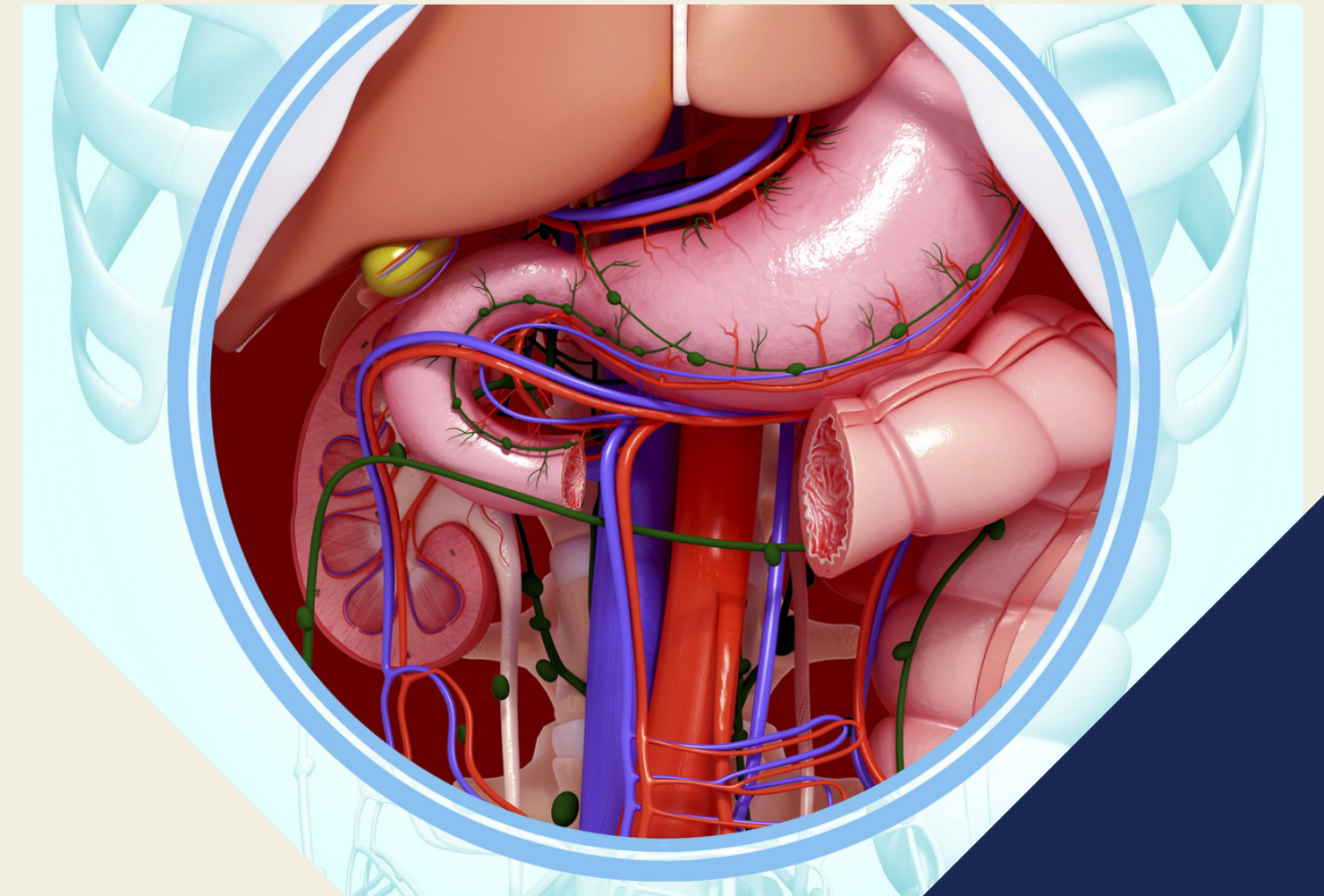
# How Do Toxins Affect the Body





# Digestive Tract

- Toxins from our food can build up in the digestive tract and cause changes in the bacterial balance in the gut with an overgrowth of pathogenic or unfriendly bacterium.
- These pathogenic germs produce bacterial toxins which in combination with the chemical toxins accumulated in our guts can affect our health in many different ways
  - They can irritate the lining of the digestive tract causing inflammation
    - Leaky gut, food allergies, gastritis
- Toxic agents can also irritate the enteric nervous system
  - Acid reflux, IBS



**SYMPTOMS** stomach pain, nausea, vomiting, bloating, belching and B12 deficiency

# Digestive Tract Detox

Let's take a closer look at how the herbal ingredients work:

Wei Detox - GI helps to:  
Clear heat and toxins from the gut  
Nurtures gut yin  
Restores gut qi

## Heat & Toxins

- Balance the microbiome in the digestive tract
- Recalibrate the immune response
- Balance cytokine levels

## Yin

- Nurture the GI tract
- Helps repair any injuries to the gut lining and enteric nerves

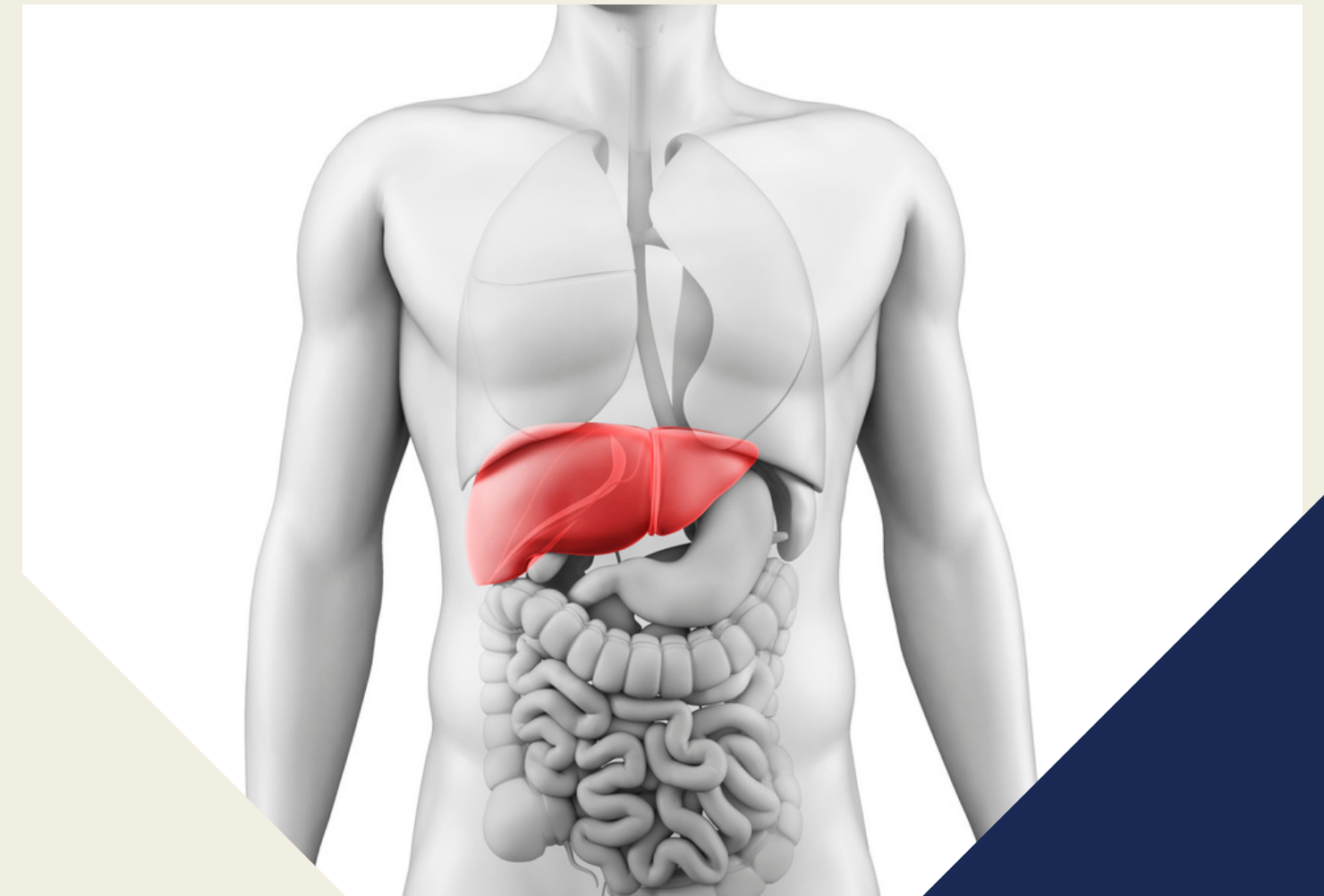
## Qi

- Restore the enteric nerve function to regulate the proper rhythm of the gut muscle contractions
- Balance the water and ion absorptions



# Liver

- If the intestinal permeability is increased due to toxin irritation, the blood from the portal vein circulation system can be contaminated with excessive amounts of bacteria, toxins, and undigested food particles.
- When the contaminated blood circulates to the liver, they can overwhelm the liver and cause the liver to become distressed as well as inflamed.
  - The distressed liver will have a reduced capability in converting toxins to non-toxic substances and allow the toxic compounds to circulate throughout the body.



**SYMPTOMS** reduced stress tolerance, mood swings, anxiety, anger, irritability, insomnia, and headaches

Let's take a closer look at how the herbal ingredients work:

Wei Detox - Liver helps to:  
Clear heat from the liver  
Nurtures liver yin  
Restores liver qi

## Heat

- Helps clear the toxins accumulated in the liver
- Relieve irritation of the liver

## Yin

- Facilitate repair of any injuries caused by the toxic compounds

## Qi

- Restore liver function and allow an enhanced capacity for liver conversion of the toxic chemicals
- Liver clearance of the toxins and pathogens in blood



# Kidney

- If the liver does not promptly convert toxins, they can irritate the kidney and cause kidney inflammation.
- Distressed kidneys have decreased efficiency when excreting metabolic waste molecules, liquid, and balancing the minerals.
- The retention and accumulation of our own metabolic wastes, liquid, and mineral imbalance can cause more profound distress to our body than the toxic chemicals.



**SYMPTOMS** waking up at night without falling back to sleep, water retention, muscle weakness

# Kidney Detox

Let's take a closer look at how the herbal ingredients work:

Wei Detox - Kidney helps to:  
Clear heat from the kidneys  
Nurtures kidney yin  
Restores kidney qi

## Heat

- Help clear the toxins accumulated in the kidney and adrenal gland
- Relieve toxin irritation

## Yin

- Help enhance microcirculation to repair injury
- Restore the structural integrity of the microcapillaries in the filtration units of the kidney and other areas of the body

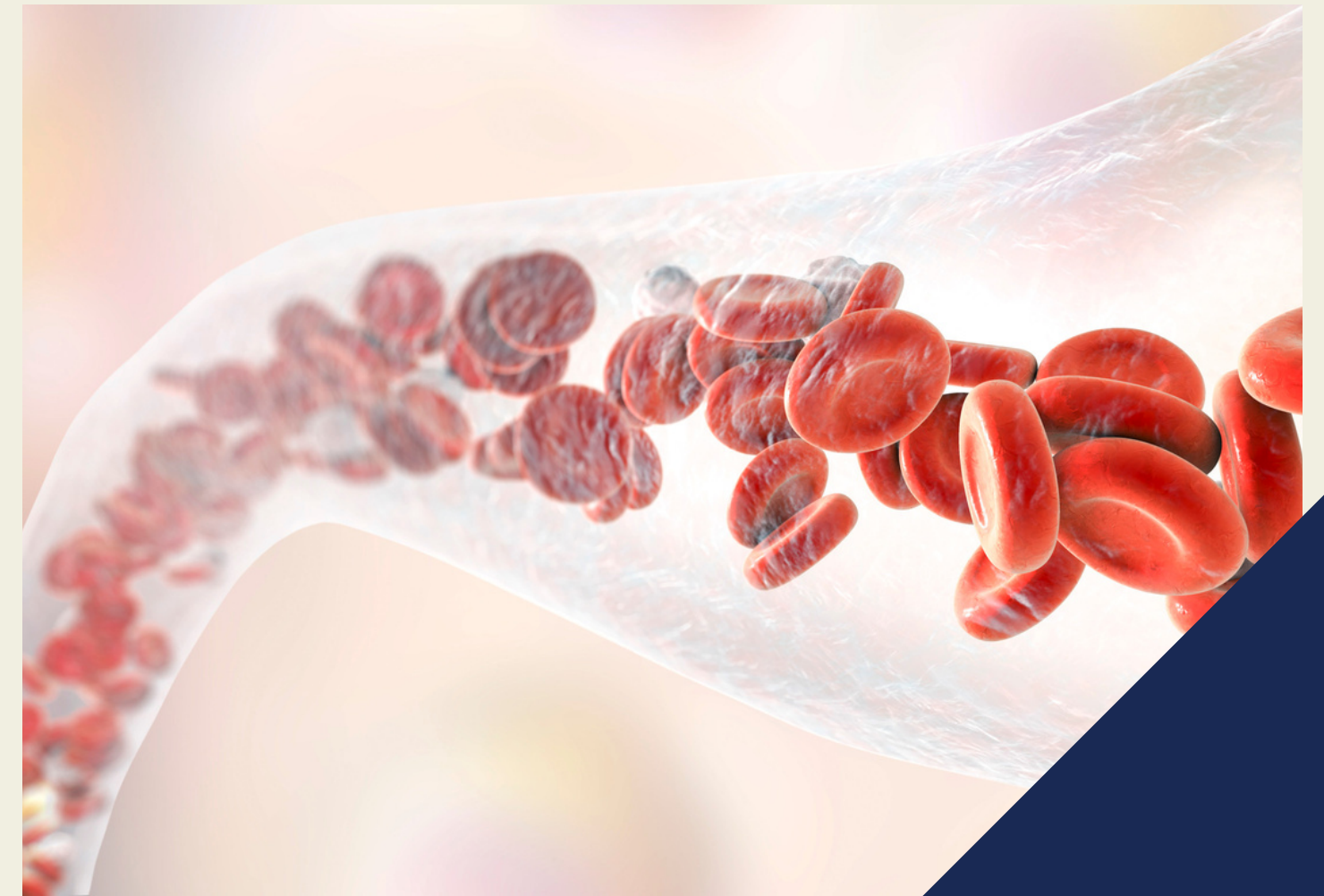
## Qi

- Help restore and enhance kidney and adrenal function to increase the kidneys' capacity of waste filtration and mineral balancing



# Blood

- Toxins circulating in the blood can make the immune cells within the blood sensitized and over-reactive to environmental allergens with overproduction and accumulation of pro-inflammatory cytokines which promote inflammation
  - Allergies, asthma



**SYMPTOMS** hay fever symptoms - sneezing attacks, rashes, itchy eyes

Let's take a closer look at how the herbal ingredients work:

Wei Detox - Blood helps to:  
Clear heat from the blood  
Nurture the blood  
Clear blood stasis

## Heat

- Help clear toxins and balance cytokine levels in the blood to help the white blood cells resume their normal sensitivity to environmental stimuli

## Nurture

- Help clear toxins in the blood vessels
- Eliminate irritation to the endothelium of the blood vessel walls

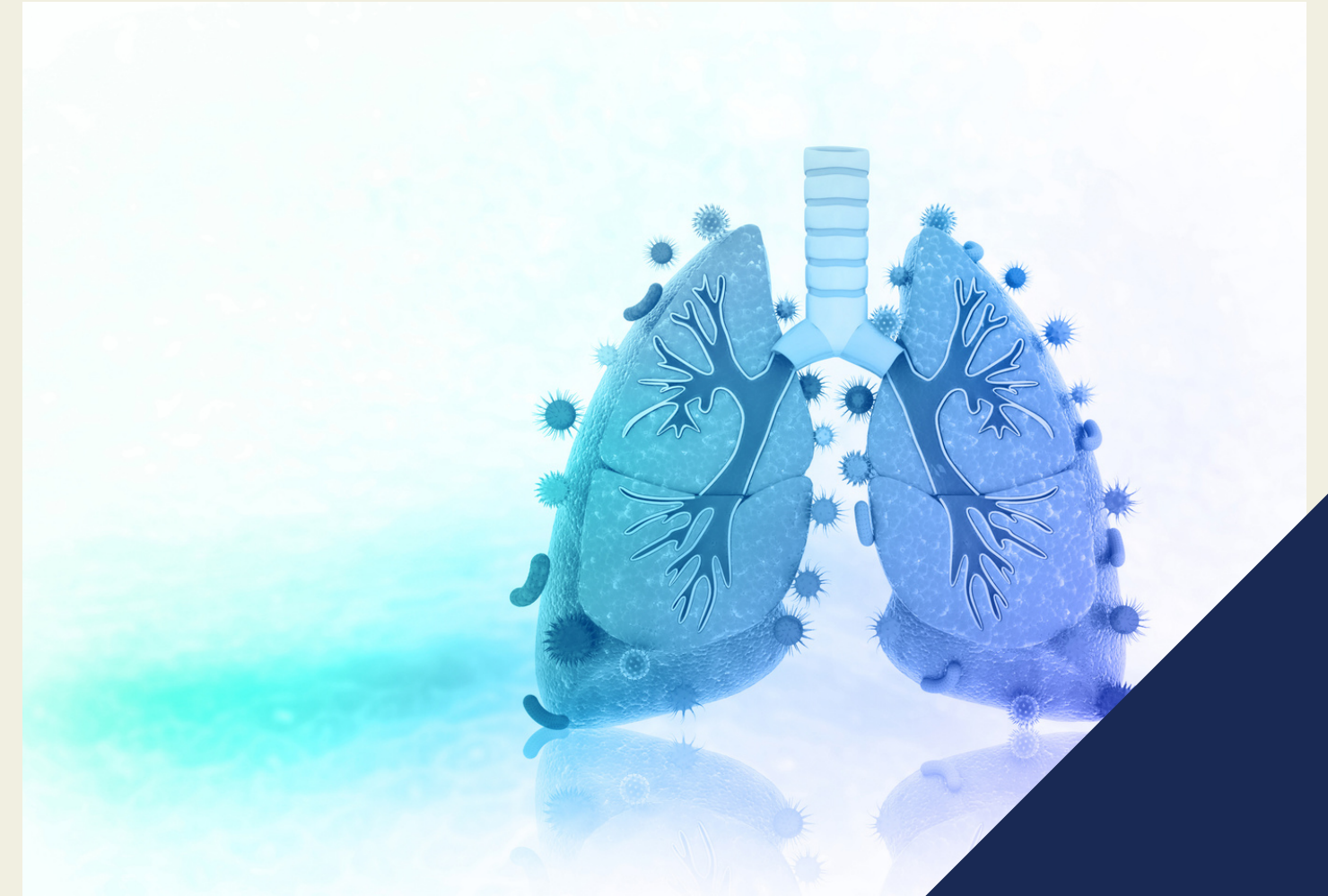
## Stasis

- Help repair damage to the blood vessels and remove toxin buildup



# Lungs

- The lungs can be affected not only by the toxins in the blood but also by air pollutants.
- The toxins can also cause lung tissue damage.
- The toxins will also suppress the function of the immune cells inside the lungs and result in poor immunity.



**SYMPTOMS** chronic cough, excessive phlegm, frequent cold, shortness of breath

Let's take a closer look at how the herbal ingredients work:

Wei Detox - Lung helps to:  
Clear heat from the lungs  
Nurture lung yin  
Enhance lung qi

## Heat

- Help clear the toxins accumulated in the lungs and relieve irritation to the bronchi and lung tissue

## Yin

- Facilitate repair of any injuries caused by the toxic compounds and pollutants

## Qi

- Help restore and enhance the immunity of the lungs to strengthen their ability to fight against inhaled pathogens

# Heart

- When toxins accumulate in the heart it can affect the heart muscle and the sinus node and interfere with their electric conduction causing a disrupted heartbeat.
- A severely disturbed heartbeat affects the blood pumped by the heart and may cause a shortage of oxygenated blood to your body and heart.



**SYMPTOMS** premature beat, skipped beat or rapid heartbeats, shortness of breath and/or chest pain



Let's take a closer look at how the herbal ingredients work:

Wei Detox - Heart helps to:  
Nurture heart yang  
Remove cold damp from the heart  
Nurture heart Qi & Yin

## Yang

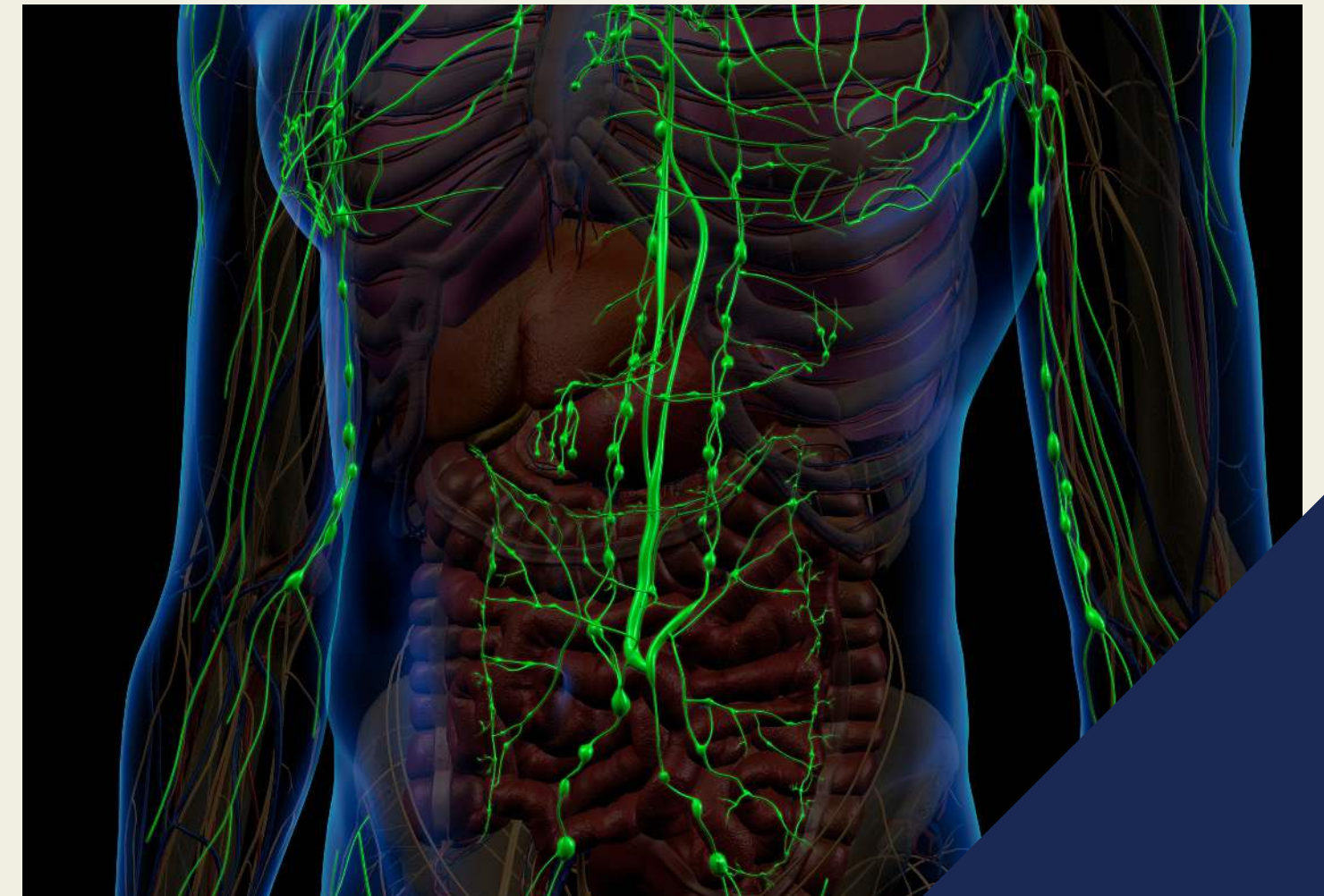
- Help improve blood flow to the heart muscle
- Clear toxins, metabolic wastes from the heart
- Reduce irritation to the heart muscle

## Qi & Yin

- Help nurture the sinus node and the hearts electrical system to improve the function of the electric conducting system and stabilize heart rhythm

# Lymphatic System

- Toxins in the lymph fluid can irritate the lymph vessel and the lymph node and cause less efficient lymph fluid recycling and clearance of pathogens and abnormal cells.
- High levels of toxins or metabolic wastes in the lymph fluid can also interfere with white blood cell function and reduce its efficiency in killing pathogens and abnormal cells.



**SYMPTOMS** fatigue, sluggishness, and body or leg heaviness, autoimmune conditions

Let's take a closer look at how the herbal ingredients work:

Wei Detox - Lymphatic helps to:  
Clear spleen damp  
Clear phlegm damp  
Clear blood stagnation

## Spleen Damp

- Help clear the toxins from the lymphatic vessel and enhance lymphatic circulation

## Phlegm Damp

- Help improve the efficiency of the collecting terminals of the lymphatic vessels
- Enhance lymph recycling from the tissues

## Blood Stagnation

- Help improve lymph node function and enhance its capacities in clearing the pathogens and abnormal cells



# Female/Male Reproductive System

- FEMALE
  - Toxin irritation to the female reproductive system can cause inflammation of the uterus and the genital tract

**SYMPTOMS** genital itch, discharge, and menstrual cramping, urgent urination

- MALE
  - Toxins in the male reproductive system can cause the prostate to become irritated by the toxins and develop chronic inflammation

**SYMPTOMS** difficulty urinating, frequent or urgent urination, and urine leakage



# Reproductive Detox

Wei Detox - Female/Male helps to:  
Clear uterine heat  
Clear lower jiao damp heat  
Clear bladder damp and heat  
Enhance qi

**Let's take a closer look at how the herbal ingredients work:**

## Heat

- Help clear the toxins from the female reproductive system
- Relieve irritation

## Damp Heat

- Help clear the toxins from the prostate
- Relieve irritation

## Damp

- Clear toxins from the urinary tract especially the urinary bladder
- Relieve the irritation to the bladder

## Qi

- Enhance immune function to help repair damages to these organs

# Usage

WEI DETOX 14 DAY

● **STEP ONE (DAYS 1-7)**  
**WEI DETOX-GI (3 CAPSULES 2X DAY)**

● **STEP TWO (DAYS 8-14)**  
**WEI DETOX-LIVER (4 CAPSULES 2X DAY)**  
**WEI DETOX-KIDNEY (3 CAPSULES 2X DAY)**



# Usage

## WEI DETOX 28 DAY

- **STEP ONE (DAYS 1-7)**  
**WEI DETOX-GI (3 CAPSULES 2X DAY)**
- **STEP TWO (DAYS 8-14)**  
**WEI DETOX-LIVER (4 CAPSULES 2X DAY)**  
**WEI DETOX-KIDNEY (3 CAPSULES 2X DAY)**  
**WEI DETOX-LUNG (3 CAPSULES 2X DAY)**
- **STEP THREE (DAYS 15-21)**  
**WEI DETOX-HEART (2 CAPSULES 2X DAY)**  
**WEI DETOX-BLOOD (3 CAPSULES 2X DAY)**  
**WEI DETOX-LYMPHATIC (3 CAPSULES 2X DAY)**
- **STEP FOUR (DAYS 22-28)**  
**WEI DETOX-FEMALE (2 CAPSULES 2X DAY)**  
**WEI DETOX-MALE (2 CAPSULES 2X DAY)**  
**WEI DETOX-LIVER (4 CAPSULES 2X DAY)**  
**WEI DETOX-KIDNEY (3 CAPSULES 2X DAY)**

# EXPECTATIONS

## WEI DETOX 14 & 28 DAY

- For the best results, it is recommended to drink plenty of water during the detox process. Drink 1-2 cups of water with each dose followed by 1-2 cups of water before taking the next dose. More water may be required while doing the Liver and Kidney Detox. Please avoid ingesting food that you do not normally eat or drink while doing the detox program. Stool pattern change and darker urine may be expected.
- \*If patients have deeper deficiencies in certain organs due to damage of the toxins, and the related symptoms only show partial improvement or the symptoms relapse soon after the detox program, additional use or continued use of pertinent detox products may be required to provide additional support to the weakened organs.
- \*Besides the toxins, organ degeneration and infections by pathogens such as viruses, fungus, and mycobacterium can also cause symptoms. If the symptoms still persist after the detox program, additional assessment by your practitioner and further recommendation of other Wei herbal formulas may be required.

# Hear From Our Patients

## Amazing Detoxification Result

*Sharon Shuppert, LAc, TX*

"My husband and I recently did the WeiDetox Program and were pleasantly surprised at the results. After the first week on the herbs, I noticed a huge reduction in the feeling of anger and irritation. After my 4th week, I was happy to see the loss of a few unwanted pounds and stabilization of my weight. My metabolism seems to be in line.

My husband had recently quit smoking and he jumped on the chance to detox his lungs. The program worked on all the organs in a systematic way, clearing the GI tract, liver, and kidneys first then progressively cleared all the organs including the heart and lungs. My husband's cravings for nicotine were gone after the program. After 40 years of smoking, that was huge! Thank you Wei Laboratories!"



# INGREDIENT LIST

## WEI DETOX-GI

- *Patrinia Villosa*
- *Pericarpium Granati*
- *Radix Aucklandiae*
- *Radix Paeoniae*
- *Radix Paeoniae Rubra*
- *Radix Platycodi*
- *Radix Puerariae*
- *Radix Scutellariae*
- *Radix Sophorae Flavescentis*
- *Rhizoma Coptidis*
- *Rhizoma Corydalis*
- *Radix Ophiopogonis*
- *Radix Rehmanniae*
- *Rock Sugar*
- *Agastache Rugosus*
- *Cortex Magnoliae Officinalis*
- *Fructus Amomi*
- *Fructus Amomi Rotundus*
- *Fructus Aurantii*
- *Fructus Jujubae*
- *Glycyrrhizae*
- *Poria*
- *Radix Pericarpium Citri Reticulatae*
- *Rhizoma Atractylodis Macrocephalae*
- *Rhizoma Cyperi*
- *Rhizoma Pinelliae*
- *Rhizoma Zingiberis*
- *Cortex Fraxini*
- *Cortex Hellodendri*
- *Radix Pulsatilla Root*
- *Rhizoma Coptidis*
- *Semen Platycladi*
- *Semen Lini*
- *Semen Armeniacae Amarum*
- *Sesame*

## WEI DETOX-LIVER

- *Fructus Crataegi*
- *Fructus Lycii*
- *Rhizoma Alismatis*
- *Rhizoma Polygonati*
- *Semen Cassiae Herba Menthae*
- *Poria*
- *Radix Angelicae Sinensis*
- *Radix Bupleuri*
- *Rhizoma Atractylodis*
- *Macrocephalae, Rhizoma Zingiberis Cortex Mori*
- *Radix Glycyrrhizae*
- *Radix Caulis Aristolochiae Manshuriensis*
- *Fructus Gardeniae*
- *Herba Lophatheri*
- *Medulla Junci*
- *Radix Bupleuri*
- *Radix Gentianae*
- *Radix Rehmanniae*
- *Radix Saposhinkoviae*
- *Rhizoma Coptidis Herba Lysimachiae*
- *Herba Taraxaci*
- *Radix Curcumae*
- *Radix Scutellariae*
- *Rhizoma Corydalis*

# INGREDIENT LIST

## WEI DETOX-LUNG

- Herba Schizonepetae
- Pericarpium Citri Reticulatae
- Radix Asteris
- Radix Platycodi
- Radix Stemonae
- Rhizoma Cynanchi Stauntonii
- Bulbus Lilii, Radix Codonopsis
- Poria
- Radix Ophiopogonis
- Rhizoma Dioscoreae
- Thallus Laminariae
- Honey
- Sweet Rice
- Fructus Schisandrae
- Radix Astragali
- Radix Saposhnikoviae
- Rhizoma Atractylodis Macrocephalae

## WEI DETOX-KIDNEY

- Cortex Moutan
- Fructus Corni
- Poria
- Radix Aconiti Lateralis Preparata
- Radix Rehmanniae Preparata
- Rhizoma Dioscoreae
- Rhizoma Alismatis
- Ramulus Cinnamomi Folium Pyrrosiae
- Talcum

## WEI DETOX-HEART

- Fructus Lycii
- Poria
- Radix Angelicae Sinensis
- Radix Ophiopogonis
- Radix Rehmanniae Preparata
- Semen Platycladi
- Cortex Lycii
- Fructus Jujubae
- Fructus Lycii
- Radix Paeoniae
- Radix Scrophulariae
- Ramulus Cinnamomi
- Rhizoma Zingiberis
- Calculus Bovis
- Cortex Moutan
- Fructus Amomi
- Fructus Corni
- Fructus Jujubae
- Radix Codonopsis
- Radix Platycodi
- Ramulus Cinnamomi
- Rhizoma Alismatis
- Rhizoma Atractylodis
- Rhizoma Dioscoreae
- Semen Coicis
- Semen Nelumbinis

# INGREDIENT LIST

## WEI DETOX-BLOOD

- **Caulis Bambusae In Taeniam**
- **Flos Lonicerae**
- **Fructus Forsythiae**
- **Herba Schizonepetae**
- **Radix Angelicae Sinensis**
- **Radix Ophiopogonis**
- **Radix Salviae Miltiorrhizae**
- **Radix Saposhinkoviae**
- **Rhizoma Coptidis**
- **Radix Astragali**
- **Radix Salviae Mil Tiorrhizae**
- **Radix Paeoniae**
- **Radix Rehmanniae Preparata**
- **Chrysanthemum Flower**
- **Gambir Plant**
- **Grassleaf Sweetflag Rhizoma**
- **Herb Paris**
- **Honeysuckle Flower**
- **Stiff Silkworm**
- **Turmeric Root-tuber**

## WEI DETOX-LYMPHATIC

- **Chinese Angelica**
- **Chinese Thorowax Root**
- **Orange Fruit**
- **Peach Seed**
- **Platycodon Root**
- **Rehmannia Root**
- **Safflower**
- **Szechwan Lovage**
- **Rhizome**
- **Two tooth Achyranthes root**
- **Fructus Jujubae**
- **Pericarpium Citri Reticulatae**
- **Poria**
- **Rhizoma Pinelliae Preparata**
- **Folium Nelumbinis**
- **Fructus Aurantii Immaturus**
- **Radix Paeoniae Rubra**



# INGREDIENT LIST

## WEI DETOX-HEAD

- Aloe
- Exocarpium Citri Grandis
- Indigo Naturalis
- Pericarpium Citri Reticulatae
- Radix Angelicae Sinensis
- Radix Astragali
- Radix Bupleuri
- Radix Codonopsis
- Radix Scutellariae
- Ramulus Uncariae Cum Uncis
- Rhizoma Atractylodis Macrocephalae
- Rhizoma Zingiberis
- Radix Angelicae Dahuricae
- Radix Saposhinkoviae
- Rhizoma Chuanxiong
- Rhizoma Cimicifuga
- Fructus Gardeniae
- Radix Paeoniae
- Cortex Moutan
- Fructus Crataegi, Fructus Tribuli
- Poria
- Radix Curcumae
- Radix Glycyrrhizae
- Radix Paeoniae Rubra
- Radix Trichosanthis
- Rhizoma Chuanxiong
- Spica Prunellae
- Concha Haliotidis
- Flos Chrysanthemi
- Fructus Corni
- Fructus Lycii
- Fructus Tribuli
- Poria
- Radix Paeoniae Alba
- Radix Rehmanniae Preparata
- Rhizoma Alismatis, Rhizoma Dioscoreae
- Eckloniae
- Flos Carthami
- Radix Bupleuri
- Radix Salviae Miltiorrhizae
- Rhizoma Chuanxiong
- Rhizoma Curcumae
- Rhizoma Spargani
- Semen Citri Reticulatae
- Caulis Bambusae In Taeniam
- Flos Lonicerae
- Fructus Forsythiae
- Herba Schizonepetae
- Radix Ophiopogonis
- Radix Salviae Miltiorrhizae
- Radix Saposhinkoviae
- Rhizoma Coptidis

## WEI DETOX-FEMALE

- Flos Carthami
- Radix Angelicae Sinensis
- Radix Et Rhizoma Rhei
- Radix Paeoniae Rubra
- Radix Rubiae
- Radix Salviae Miltiorrhizae
- Rhizoma Zingiberis
- Semen Persicae
- Pollen Typhae
- Pericarpium Citri Reticulatae
- Radix Astragali
- Radix Bupleuri
- Radix Codonopsis
- Rhizoma Atractylodis Macrocephalae
- Rhizoma Cimicifugae

# INGREDIENT LIST

## WEI DETOX-MALE

- **Pericarpium Citri Reticulatae**
- **Radix Angelicae Sinensis**
- **Radix Astragali**
- **Radix Bupleuri**
- **Radix Codonopsis**
- **Rhizoma Atractylodis Macrocephalae**
- **Rhizoma Cimicifugae**
- **Pollen Typhae**
- **Radix Paeoniae Rubra**
- **Cortex Cinnamomi**
- **Fructus Evodia**
- **Poria, Preparata**
- **Radix Codonopsis**
- **Radix Rehmanniae**
- **Radix Scutellariae**
- **Semen Ginkgo**
- **Semen Nelumbinis**
- **Semen Plantaginis**

# Research

Wei Laboratories offers a full-range of Chinese herbal supplements to address hundreds of health conditions.

## **The herbal formulas are determined through the following research process:**

- The individual herbs being selected are based on their TCM descriptions and the pharmacological/clinical research publications.
- The use of certain herbal combinations for a specific condition is based on clinical research publications on the successful treatment of the condition utilizing those herbs, our accumulated knowledge, and the practitioner's previous feedback.

## **Clinical testing of the formula with practitioners undergoes the following process:**

- The herbal formula will be tested with practitioners in their clinic for a specific condition which is defined by the TCM and Western diagnosis.
- After obtaining 6 consecutive positive patient outcomes, we will launch the formula for that specific condition.
- Practitioners may continue their clinical testing for other indications and give us their positive feedback. We will then make further testing on those indications with other practitioners until we have 6 consecutive positive patient outcomes before we include the new indication.

## **Wei Labs has had many practitioners who have participated in this process and have given us valuable feedback in the past twenty years. Some of these practitioners include:**

- Dennis Sievers, DC, Kinesiologist, VA; Ronald Mullen, LAC, NC; Brian Hess, DC, VA; Marylin Coady, DC, Functional Medicine, NM; Kamau Kokayi, MD/LAC, NY; John Filippini, DC, Functional Medicine, CA; Charles Lewis, ND, AR; Ayla Wolf, DAOM, MN





# Manufacturing Process

Here's why you can always be confident in Wei Laboratories products.



## **US BASED WHOLESALEERS**

All of Wei Laboratories herbal ingredients are purchased through US based wholesalers who must meet the FDA guidelines to sell in the US.



## **CLEAN INGREDIENTS**

Wei Laboratories manufacturing of the products not only meet the FDA requirement, it exceeds it. For example, Wei Labs incorporates a sterilization process which ensures longer shelf-life without the use of any preservatives.



## **CGMP FACILITY**

Wei Laboratories formulas are packaged and produced in a cGMP facility and follows all industry guidelines required by the FDA to ensure our products are top of the line.

# Partnership Benefits

## Your Vision is Our Focus

Our primary focus is benefiting your practice in as many ways as possible. Let us learn about your practice and vision, then work closely with you to design a comprehensive plan to help you achieve your success.



Marketing Support

Patient Referrals

Addition to Your Staff

Troubleshooting

In Office Marketing Brochures / Flyers

Commission